

1011742 Old Lumberton Road Laurinburg, NC 28353



For Sale | Land | \$44,750



Property Attributes

Parcel ID	01-0250-01-022-01
DB	0015/Page 0285
Acres	5.7 Acres
Zoning	Light Industrial
Municipality	Maxton ETJ
Utilities	Public Water

Features

- This property is located in Scotland County
- US Highway 74 Bypass to Airport Road
- Right onto Airport Road Property on the SE Corner of Old Lumberton Road and Airport Road
- This property is ideally located in close proximity to Highway 74 Bypass and surrounding manufacturing facilities

Janice M. Dixon, CCIM

Principal

C 910-916-5771

jdixon@ccim.net

www.synergycommercialproperties.com

Synergy Commercial Properties, LLC

Brokerage, Management & Consulting

281 W. Pennsylvania Avenue

Southern Pines, NC 28387

T 910-295-1801 | F 877-255-7990

Aerial Map



Janice M. Dixon, CCIM

Principal

C 910-916-5771

jdixon@ccim.net

www.synergycommercialproperties.com

Synergy Commercial Properties, LLC

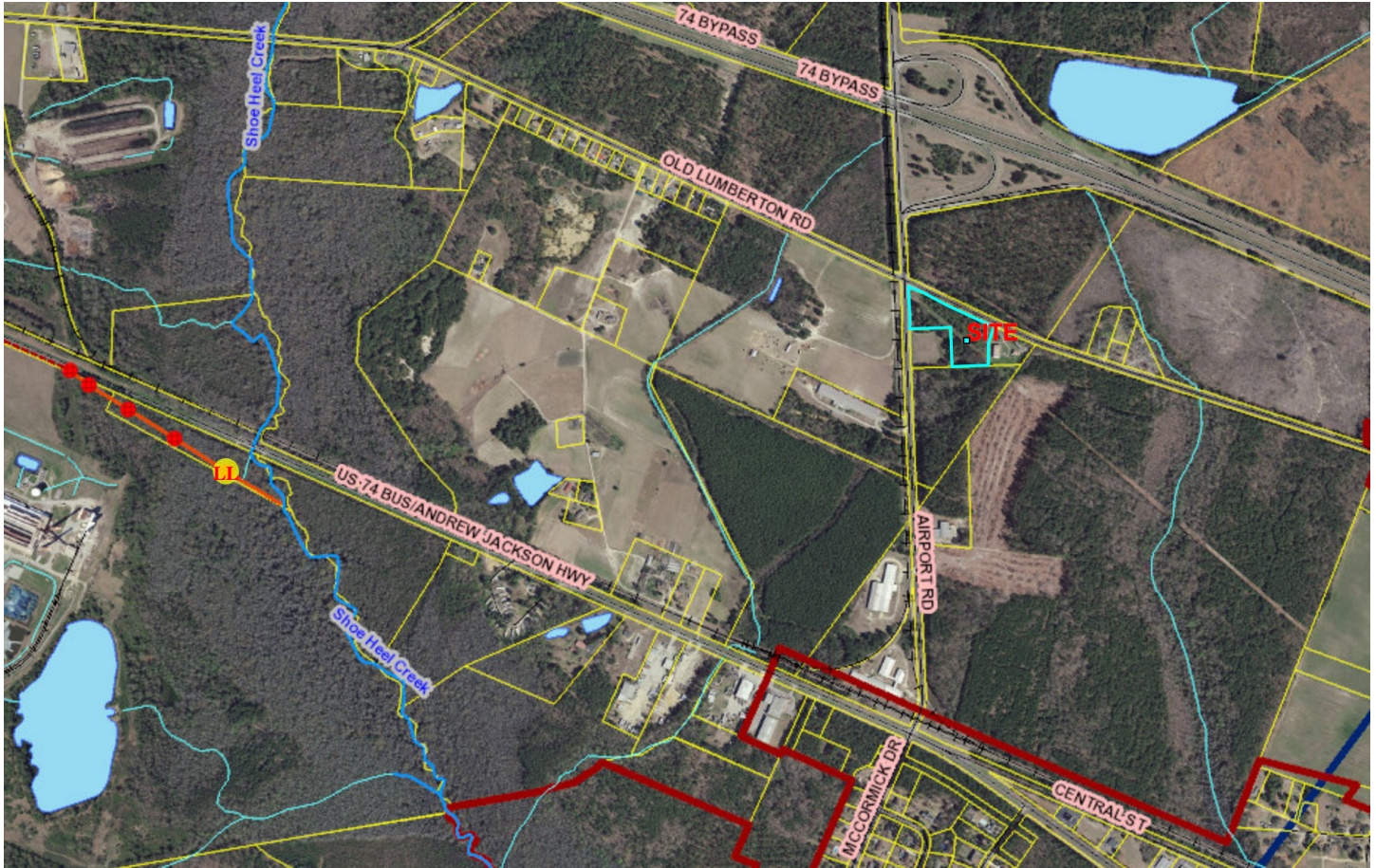
Brokerage, Management & Consulting

281 W. Pennsylvania Avenue

Southern Pines, NC 28387

T 910-295-1801 | F 877-255-7990

Utility Map



Janice M. Dixon, CCIM

Principal

C 910-916-5771

jdixon@ccim.net

www.synergycommercialproperties.com

Synergy Commercial Properties, LLC

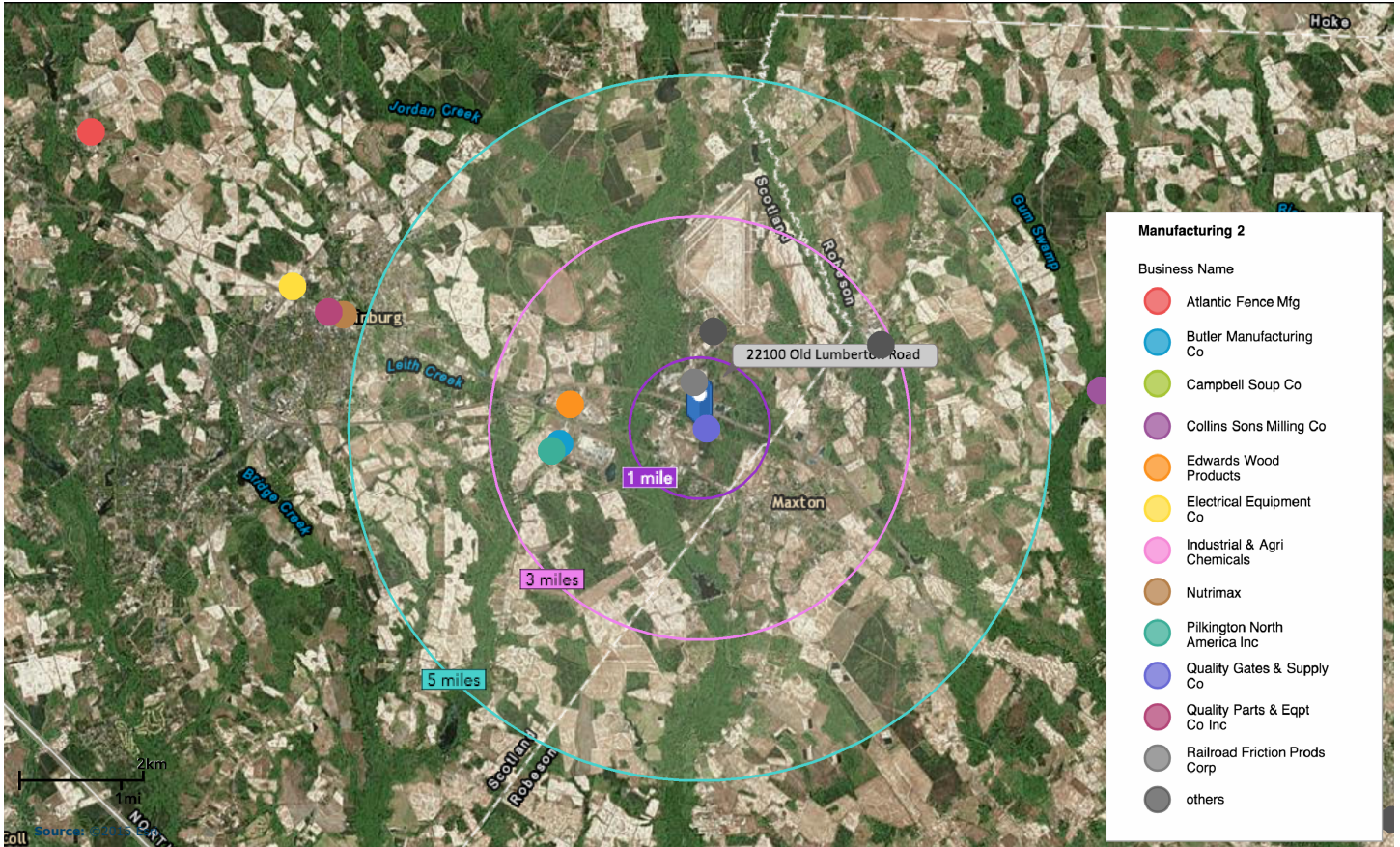
Brokerage, Management & Consulting

281 W. Pennsylvania Avenue

Southern Pines, NC 28387

T 910-295-1801 | F 877-255-7990

Manufacturing Facilities



Janice M. Dixon, CCIM

Principal

C 910-916-5771

jdixon@ccim.net

www.synergycommercialproperties.com

Synergy Commercial Properties, LLC

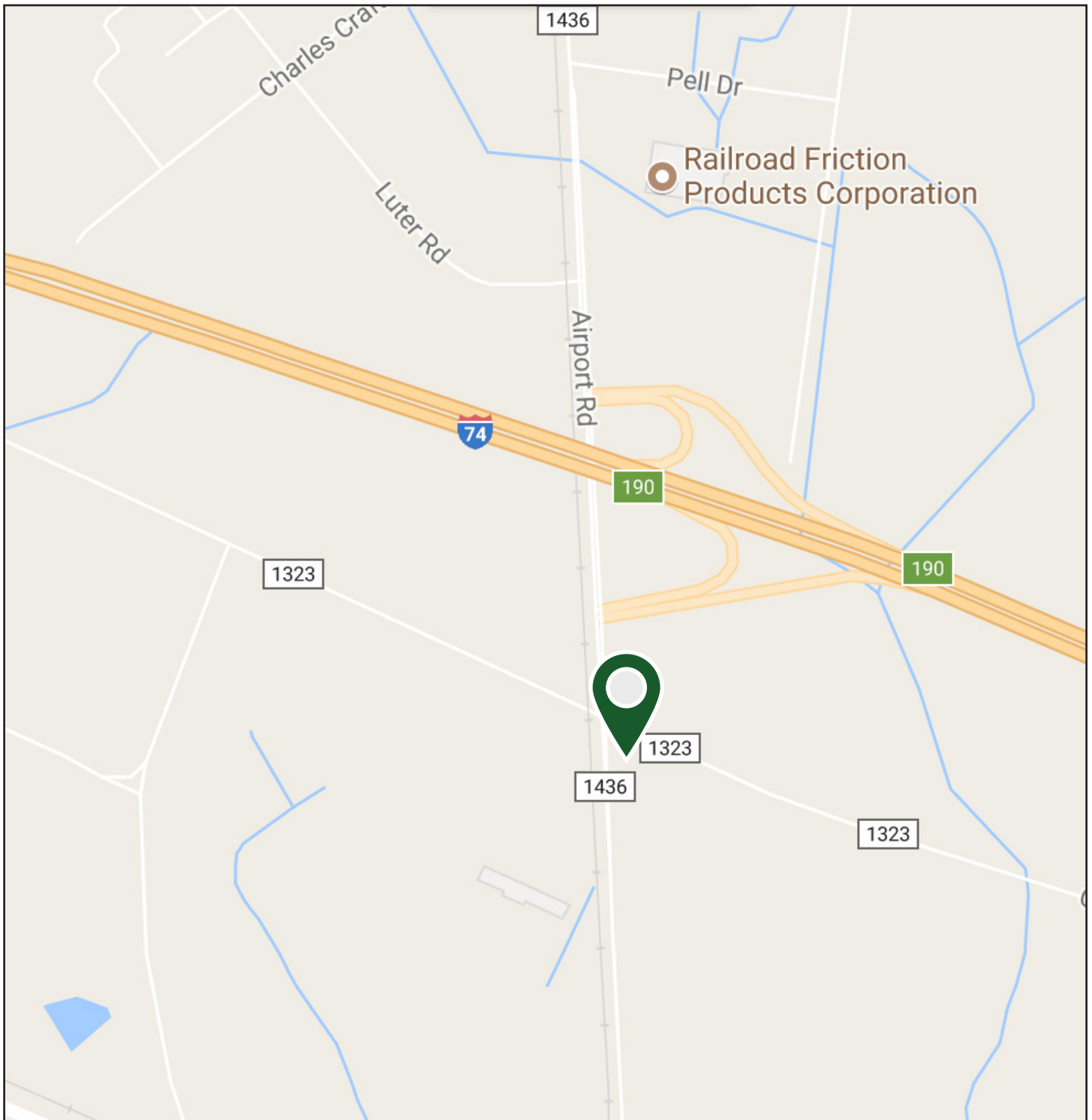
Brokerage, Management & Consulting

281 W. Pennsylvania Avenue

Southern Pines, NC 28387

T 910-295-1801 | F 877-255-7990

Locator Map



Janice M. Dixon, CCIM

Principal

C 910-916-5771

jdixon@ccim.net

www.synergycommercialproperties.com

Synergy Commercial Properties, LLC

Brokerage, Management & Consulting

281 W. Pennsylvania Avenue

Southern Pines, NC 28387

T 910-295-1801 | F 877-255-7990

Demographics

Population	1 Mile	3 Miles	5 Miles
2016	343	3,790	11,836
Total Households	1 Mile	3 Miles	5 Miles
2016	132	1,486	3,918
Average Household Income	1 Mile	3 Miles	5 Miles
2016	\$54,181	\$35,306	\$36,847

Laurinburg is the county seat of Scotland County. Located in southern North Carolina near the South Carolina state border, Laurinburg is southwest of Fayetteville and is home to St. Andrews University.

A three-time All America City located in the Sandhills region, Laurinburg offers the charm and quiet living of a small southern town with close proximity to larger cities, the mountains and the coast. Developing from its rich agricultural heritage, Laurinburg is still an agricultural community and it is also the progressive business and cultural center of Scotland County.

The information contained herein was given to Synergy Commercial Properties by the owner of the property or other sources we deem reliable. We have no reason to doubt its accuracy, but we do not guarantee it. All information should be verified prior to purchase or lease.

Janice M. Dixon, CCIM

Principal

C 910-916-5771

jdixon@ccim.net

www.synergycommercialproperties.com

Synergy Commercial Properties, LLC

Brokerage, Management & Consulting

281 W. Pennsylvania Avenue

Southern Pines, NC 28387

T 910-295-1801 | F 877-255-7990