

12841 Eastover Lane
Laurinburg, NC 28352



For Sale | Land | \$1,700,000



Building Attributes

Acres 67
Zoned Commercial
Pin # 01-0245-01-011-01. 010245-011
DB 915 / Page 173

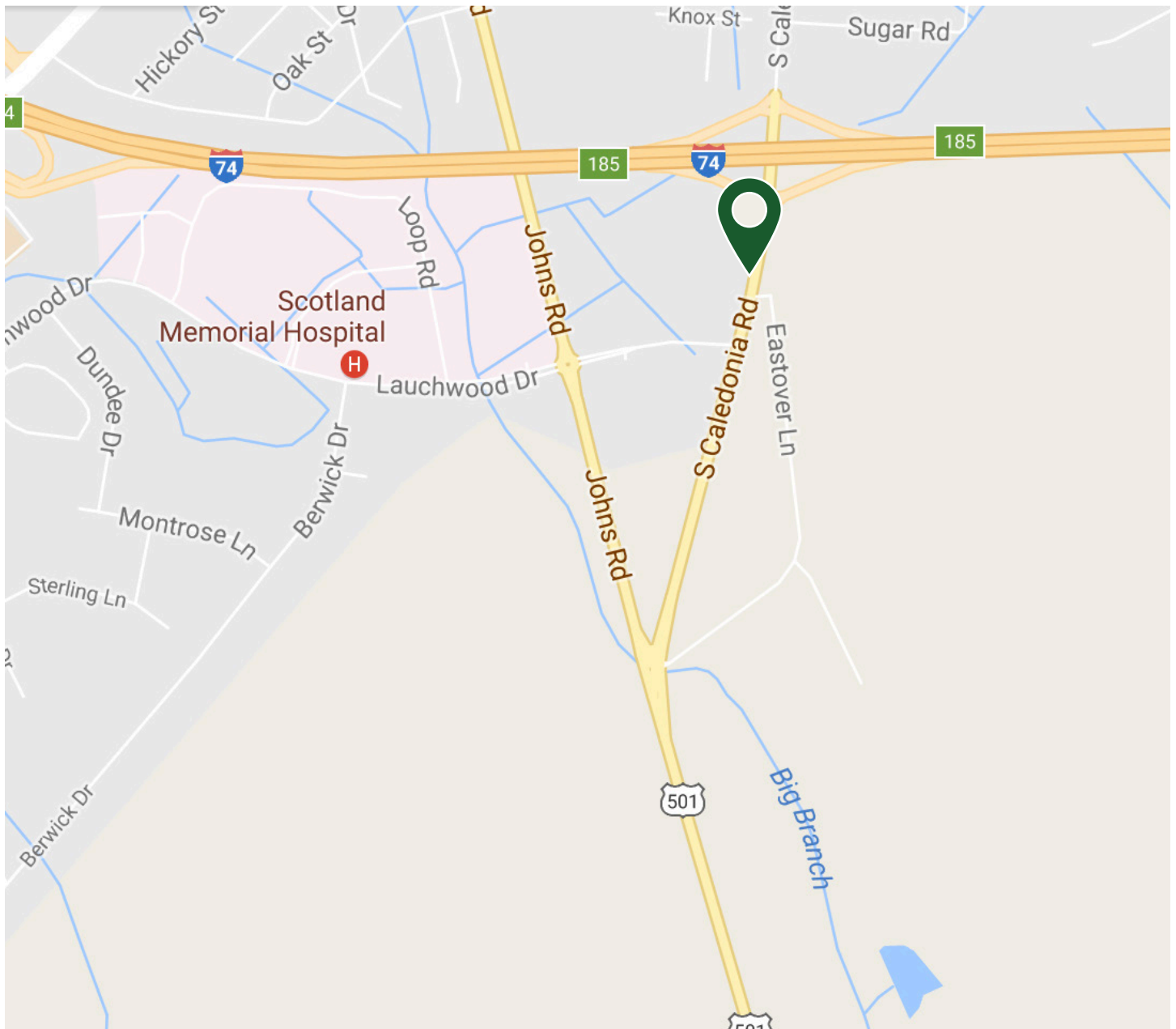
Features

- US Highway 15-501 to S. Caledonia Road
- Property on left
- Frontage and visibility on Hwy 15-501 Business and US Hwy 74 Bypass Laurinburg, NC
- Land is described as Agricultural/Farm
- This property is in close proximity to the hospital and is ideal for medical office, & retail

Janice M. Dixon, CCIM
Principal
C 910-916-5771
jdixon@ccim.net
www.synergycommercialproperties.com

Synergy Commercial Properties, LLC
Brokerage, Management & Consulting
281 W. Pennsylvania Avenue
Southern Pines, NC 28387
T 910-295-1801 | F 877-255-7990

Locator Map



Janice M. Dixon, CCIM

Principal

C 910-916-5771

jdixon@ccim.net

www.synergycommercialproperties.com

Synergy Commercial Properties, LLC

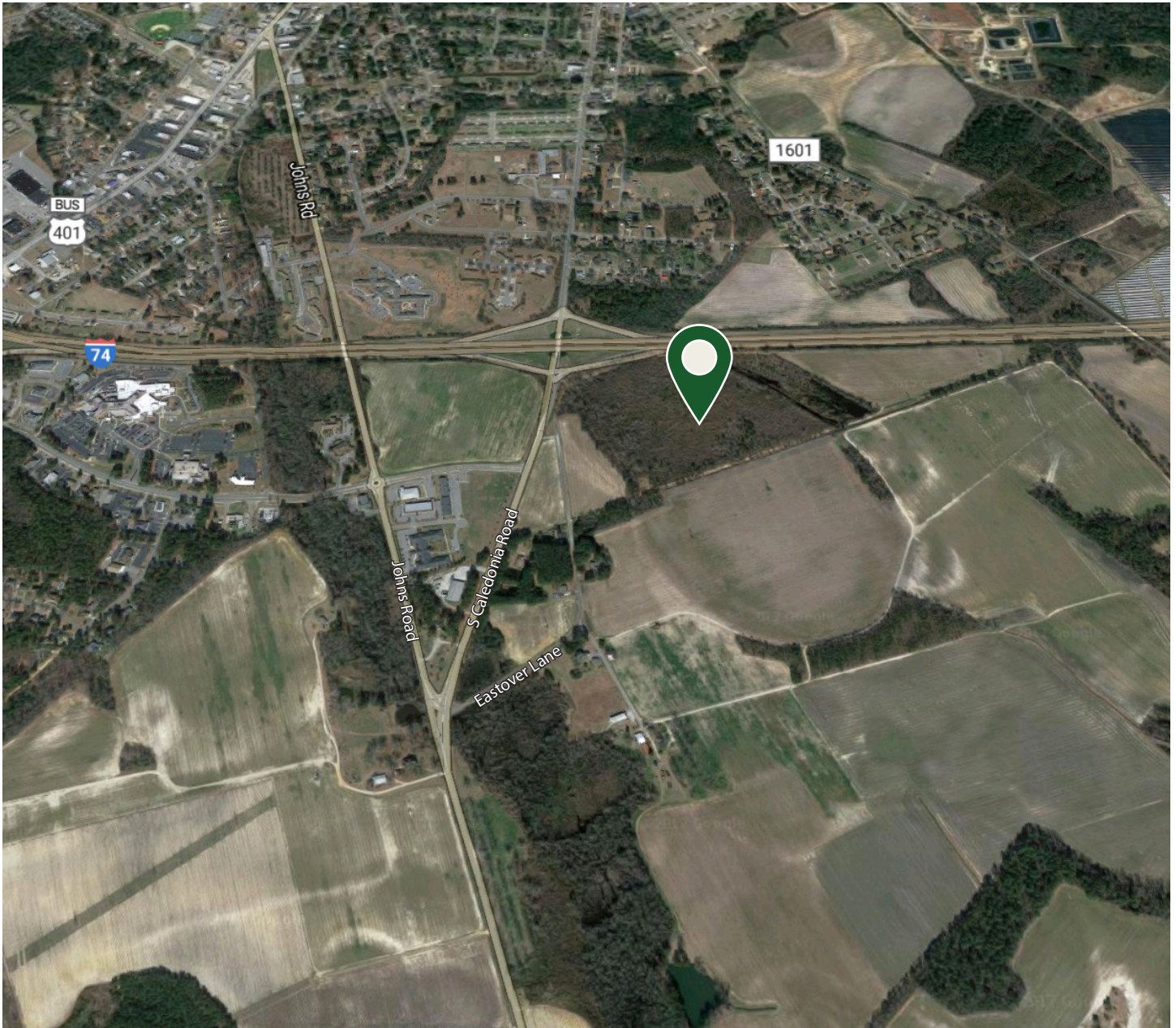
Brokerage, Management & Consulting

281 W. Pennsylvania Avenue

Southern Pines, NC 28387

T 910-295-1801 | F 877-255-7990

Vicinity Map



Janice M. Dixon, CCIM

Principal

C 910-916-5771

jdixon@ccim.net

www.synergycommercialproperties.com

Synergy Commercial Properties, LLC

Brokerage, Management & Consulting

281 W. Pennsylvania Avenue

Southern Pines, NC 28387

T 910-295-1801 | F 877-255-7990

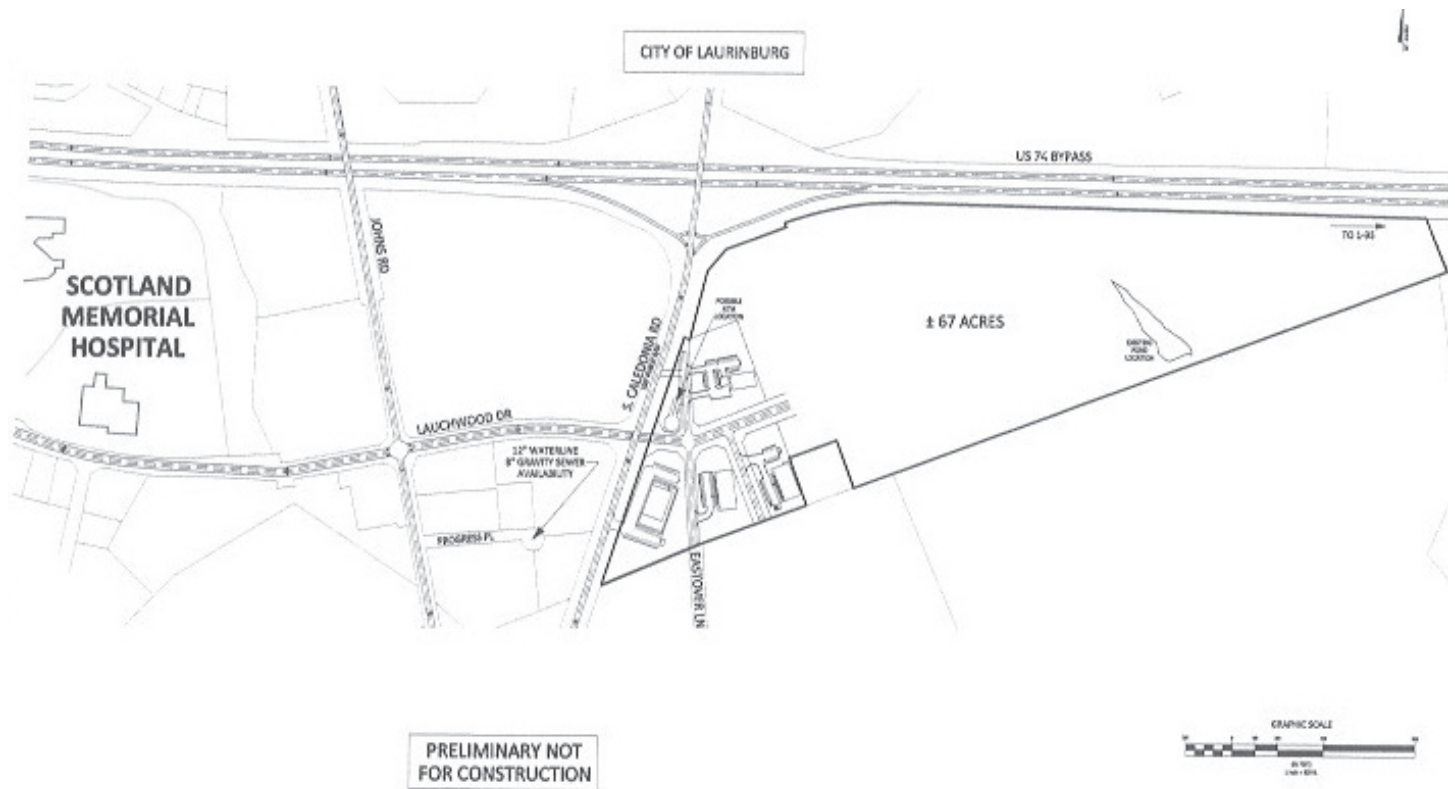
Site Plan



Janice M. Dixon, CCIM
Principal
C 910-916-5771
jdixon@ccim.net
www.synergycommercialproperties.com

Synergy Commercial Properties, LLC
Brokerage, Management & Consulting
281 W. Pennsylvania Avenue
Southern Pines, NC 28387
T 910-295-1801 | F 877-255-7990

Site Plan



Janice M. Dixon, CCIM
Principal
C 910-916-5771
jdixon@ccim.net
www.synergycommercialproperties.com

Synergy Commercial Properties, LLC
Brokerage, Management & Consulting
281 W. Pennsylvania Avenue
Southern Pines, NC 28387
T 910-295-1801 | F 877-255-7990

Demographics

Population	1 Mile	3 Miles	5 Miles
2016	1,995	15,282	20,927
Total Households	1 Mile	3 Miles	5 Miles
2016	819	5,961	8,057
Average Household Income	1 Mile	3 Miles	5 Miles
2016	\$32,587	\$38,773	\$41,846

Laurinburg is the county seat of Scotland County. Located in southern North Carolina near the South Carolina state border, Laurinburg is southwest of Fayetteville and is home to St. Andrews University.

A three-time All America City located in the Sandhills region, Laurinburg offers the charm and quiet living of a small southern town with close proximity to larger cities, the mountains and the coast. Developing from its rich agricultural heritage, Laurinburg is still an agricultural community and it is also the progressive business and cultural center of Scotland County.

The information contained herein was given to Synergy Commercial Properties by the owner of the property or other sources we deem reliable. We have no reason to doubt its accuracy, but we do not guarantee it. All information should be verified prior to purchase or lease.

Janice M. Dixon, CCIM

Principal

C 910-916-5771

jdixon@ccim.net

www.synergycommercialproperties.com

Synergy Commercial Properties, LLC

Brokerage, Management & Consulting

281 W. Pennsylvania Avenue

Southern Pines, NC 28387

T 910-295-1801 | F 877-255-7990